

Moderators: Gerwin & Victor



**Gerwin Zomer,
BISCI Director Logistics
Maastricht University, School
of Business & Economics**



**Prof. dr. ir. Victor Verboeket,
Professor Supply Chain
Innovation, Fontys**

Interactive Round Table Structure

Theme 1 – Setting the Scene

Theme 2 – Sustainable Logistics & SCM

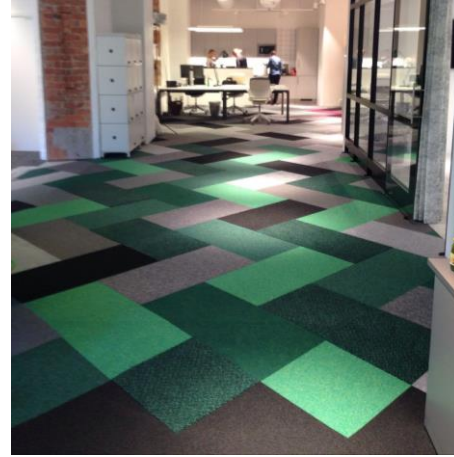
Interactive Quiz

Theme 3 – Chain Collaboration

Theme 4 – Digital Green



Eline Oudenbroek,
VP Supply Chain &
Operations EMEA,
Interface



Interface[®]

“Manufacturer of carpet, rubber and vinyl tiles”



**Marcel Koks,
Sr Industry & Solution
Strategy Director Food &
Beverage, Infor**



“Enterprise Software Solution Provider”



Sylvester van der Logt,
CEO Seacon Logistics



SEACON

LOGISTICS

“Logistics Service Provision”

Bob Joosten



**Bob Joosten,
CEO Wessem Port
Services**



“Inland Port Operator and LSP in dry bulk”

Theme 1 – Setting the Scene

“The European Green Deal is a set of EC policy initiatives with the aim to make the EU climate neutral in 2050, and to reduce GHG-emissions by 55% in 2030 compared to 1990 levels.”

European Commission, Dec 2019, The European Green Deal

With this in mind...

1. Setting the scene - Menti statement

“Sustainability as a major challenge is being hyped; If we continue making our processes more efficient, sustainability will simply follow”

a. Fully agree

b. Makes sense with average transport load factors of 45%

c. Disagree, just efficiency gains and electrification do not get us there

d. Fully disagree, economic growth and sustainability do not go hand in hand

Theme 2 – Sustainable Logistics and SCM

“Transport represents almost a quarter of Europe's greenhouse gas emissions and is the main cause of air pollution in cities. Within this sector, road transport is by far the biggest emitter accounting for more than 70% of all GHG emissions from transport in 2019.”

EC Strategy for Sustainable and Smart Mobility, COM(2020)789

The challenge is growing...

2. Sustainable Logistics & SCM - Menti statement

“It is Logistics that co-created the carbon challenge, offering convenience for both consumers and shippers, with highly efficient but unsustainable global fulfilment solutions”

- a. Agree, start with yourself;*
- b. Disagree, the shippers specify the sustainability requirements;*
- c. Disagree, the consumer is the key to sustainability;*
- d. It is a joined challenge for us all;*

Intermezzo

The BISCO Logistics Quiz “Truth or Dare”

Quiz question 1

“Logistics has the largest share in the regional economy of Nrd Limburg, followed by manufacturing and agrifood”

Quiz question 2

“The water consumption of a kg avocados is > 30 times larger than for a kg of apples.”

Quiz question 3

“In 2021, the % renewable energy in the Netherlands was higher than 13%?”

Quiz question 4

“In 2021, there were more than 12 billion connected IoT devices around the globe”

Quiz question 5

“End of 2021, Venlo already had 16 warehouse roofs equipped with 250.000 solar panes. They produce much more energy than they consume. Less than 25% is for their own energy demand”.

Quiz question 6

“According to the EU, up to 80% of a product’s lifecycle environmental impact is determined at the design stage.”

Quiz question 7

“According to its website, Chemelot employs > 100 different nationalities”

Quiz question 8

“Chemelot uses mostly fossil fuels as input: natural gas and naphtha, transported via pipelines. But this has to be replaced by bio based feedstocks, such as sugar beets. We talk about the equivalent of 275.000 yearly truck movements.”

Quiz question 9

“Venlo has 4 rail terminals and 1 inland port. Container transshipment capacity of rail in Venlo is also more than 4 times as big as inland waterway transport”

Quiz question 10 – proxy question

“As a result of the Ukraine war, inland shipping experienced a strong revival of coal transport in 2021 (+35%). How much ton coal was transported via inland shipping in 2021?”

Theme 3 – Supply Chain Collaboration

“The ‘collaboration gap’ threatens to undermine climate progress and delay net zero by decades.”

International Energy Agency (IEA), International Renewable Energy Agency (IRENA) and the UN Climate Change High-Level Champions, Sept 2022, Breakthrough Agenda Report 2022

With this in mind...

3. Supply Chain Collaboration – Menti Statement

“We step too often too naive into collaboration projects, it is extremely hard to make chain collaboration successful”.

- a. Agree, let's concentrate first on making our own house in order;*
- b. Agree, so we have to learn quickly. We simply cannot realise the Green Deal without collaboration*
- c. Disagree, it's not naïveté, it is rather the focus on self-interest that hinders us.*
- d. Disagree, collaboration is fun and offering purpose to us.*

Theme 4 – Digital Green Logistics and SCM

“ChatGPT ranks ‘Sustainability’ as the number one supply chain challenge in 2035: As consumers and governments become more focused on sustainability, there may be increasing pressure on supply chains to adopt more environmentally friendly practices. This could include reducing carbon emissions, using renewable energy, and promoting circular economy principles.”

ChatGPT answer to the question ‘What are the biggest supply chain challenges in 2035?’

Artificial Intel is everywhere ...

4. Digital Green Logistics & SCM - Menti statement

“Real-time transport visibility will be commonplace in a couple of years”

- a. Agree, affordable IoT makes all logistics assets smart. Advanced analytics will do the rest. The Green Deal objectives are within reach.*
- b. Agree, but real-time decision making remains a major hurdle coming years.*
- c. Disagree, mainstream logistics still focuses on cost, so only for high-value products*
- d. Disagree, like most digital transformation hypes, IoT and 6G/7G is also being hyped.*



Wrap up & Closure